



Turnkey Solutions For New Projects or Upgrade of Existing Playing Facilities



- We work with your architect to plan the facility and optimise possibilities, which ensure a wider verity and range of activities.
- Our suggestions and solutions, are eye catching, low maintenance and long lasting, ensure reduced recurring cost, without compromising on the deliverance.
- Our solutions always work out better in all respects as well as turn out to be the cheaper solutions, in the long run.
- Bound to enhance the look and feel of the school and easy to maintain. Gives the Children find more time playtime.

We offer a range of attractive and innovative installations for new & existing playgrounds, housing projects, schools, colleges or public parks.

A combination of installations, depending on the playgrounds size, can maximum use of the limited space available to you.

INVISION can offer you cost effective bundled offers for turnkey basis.

Composite Offerings

- A **covered shed** for the playground The design could be simplistic or appealing to the eye whilst retaining the functional requirements
- A **suitable fencing** for enclosing the play areas
- **Multi Activity Wall** on the Fencing to allow more children to be occupied
- **Multi Utility Games Synthetic Turf** to provide **24 x 7 x 365** playing facility for the children with little or no maintenance problems.
- **Embedded Playground** to make your grey areas colourful, educative and fun.

Full Synthetic Turf Football Field with Multi Sport markings



MULTI COLOURED SYNTHETIC TURF FOR MULTI SPORT ACTIVITIES



Low maintenance synthetic turf suitable for most school sports like Tennis, Basketball, Badminton, Hockey, Football, Cricket, etc. with inlaid Line markings



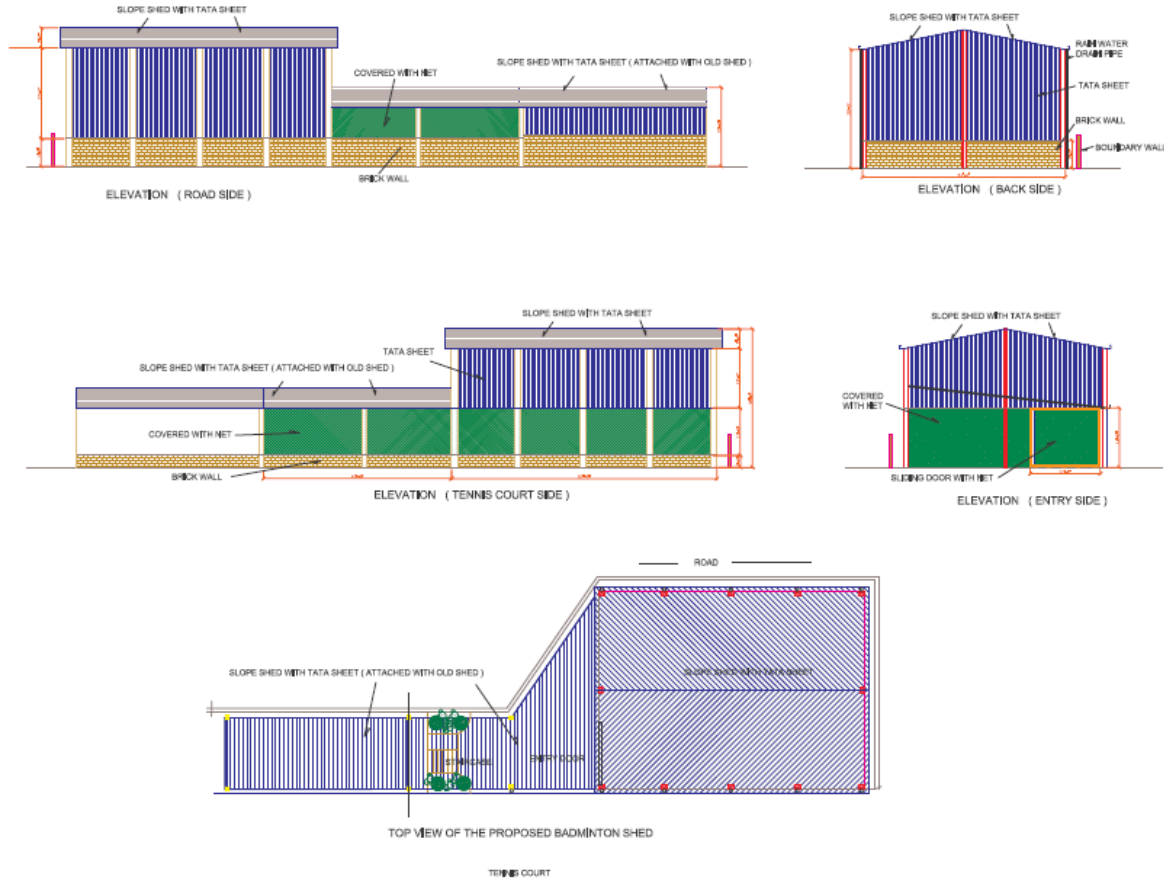
Mount Zee Litera School – D H Road

COVERED PILLAR LESS SHED



- A structure, supported entirely from the periphery allowing unobstructed full use of the free space beneath it for playing.
- Allows usage in all weather conditions and can be floodlit for after school hours.

Shed elevations



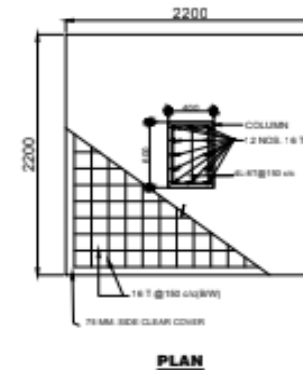
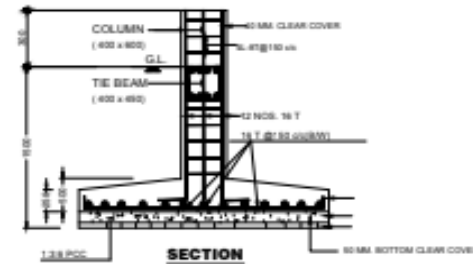
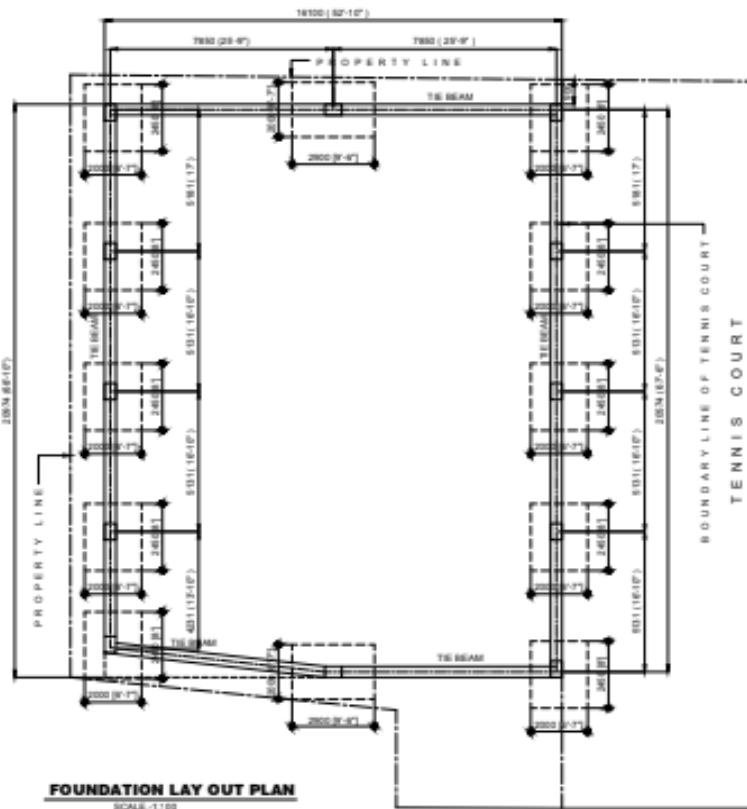
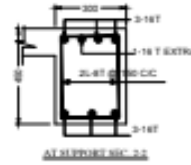
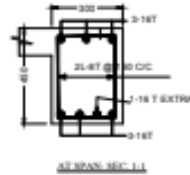
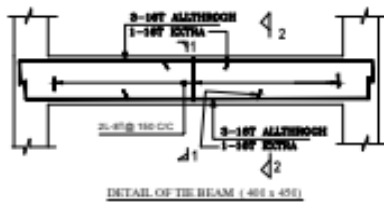
Engineering Drawing



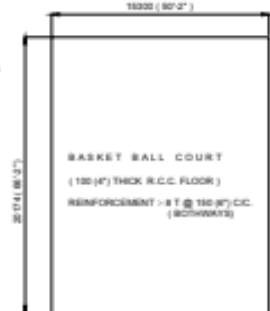
invision
Sports Management Pvt. Ltd.

NOTES & SPECIFICATIONS

- ALL DIMENSIONS ARE IN MM UNLESS OTHERWISE MENTIONED.
- GRADE OF CONCRETE M30 AND GRADE OF STEEL FE 415.
- CENTER LINE GIVEN HERE ARE BEAM CL ONLY.
- IN CASE OF ANY DISCREPANCY IN DWG. REFER TO ARCHITECT.
- **FOUNDATION** - 1) BOTTOM COVER- 50 MM SHOULD BE MAINTAINED.
- 2) BEAM COVER- 75MM.
- **COLUMN**- CLEAR COVER - 40 MM.
- **REIN.**- 1) TOP - 25 MM. 2) BOTTOM - 25 MM.
- 3) SIDE-15 MM.
- **EXTRA TOP REINFORCEMENT**-
- 0.3% C/DISTANCE OF DISCONT. SUPP.
- **EXTRA TOP REINFORCEMENT**-
- 0.3% C/DISTANCE OF CONT. SUPP.
- **EXTRA BOTTOM REINFORCEMENT**-
- 0.1% C/DISTANCE OF DISCONT. SUPP.
- **EXTRA BOTTOM REINFORCEMENT**-
- 0.1% C/DISTANCE OF CONT. SUPP.



DETAIL OF ISOLATED FOOTING
SCALE - 1:50



STRUCTURAL DRAWING OF FOUNDATION OF PROPOSED BASKET BALL COURT AT BALLYGAUNGE, KOLKATA



SCALE - 1:100, 1:25



HEAVY DUTY IRON FENCING

- Safeguards the pitch area from intrusion & Spectators from injury.
- Keeps the ball in play and saves time.



MULTI ACTIVITY GAMES WALL



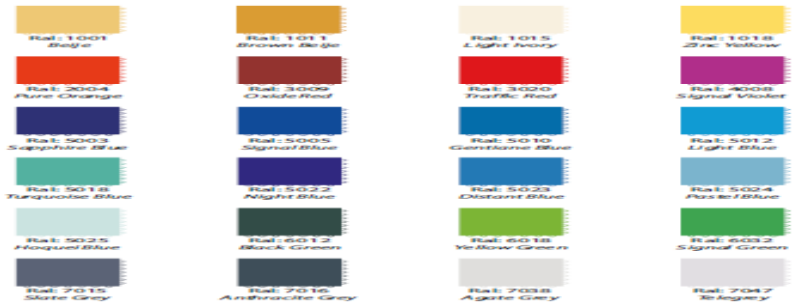
- Convert part of the fencing into a **Multi Activity Games Wall**.
- Manufactured from steel for durability, and galvanised for long life.
- Encourages children to **develop better hand eye coordination**
- **Useful resource for PE** teachers in developing the skills aspect in games lessons
- Gets children **focussed on skills** and helps in their overall development



MULTI COLOURED PLAYGROUNDS FOR CHILDREN


26 11:00

Interlocking Multisport P.P.Tiles, Zero maintenance and with 5,15 or 25 years warranty Use for Basketball, Tennis, Volleyball, Badminton...



Choice of Colours

Guarantees & Warranties



Sponsor
Surfaces for Sport and Leisure

Wellington Mills
Liversedge
West Yorkshire
WF15 7FH

PRODUCT WARRANTY

Manufacturer	PLAYRITE A DIVISION OF NATIONAL FLOORCOVERINGS LTD WELLINGTON MILLS, LIVERSEDE WEST YORKSHIRE WF15 7XA
Product	Matchplay 2
Product Code	MY02
Effective Date	22nd July 2015
Warranty Number	PR240NP Bhawanipore Education Society College

1. Scope

This warranty is given by the Manufacturer for the benefit of **Invision Sports Management Pvt Ltd.** (The Company) of the Product.

Where this warranty conflicts with the manufacturers standard terms and conditions of sale, the terms of this warranty will prevail.


2. Warranty Terms

Subject to the conditions and exclusions set out below, the Product has a warranty for a period of 5 years from the date of installation against defects in manufacturing, materials and ultra violet degradation (including light fastness) and excessive wear.

3. Conditions


For this warranty to be effective and to be binding, the following conditions must apply namely:

- (i) The product must be installed at a location, that is:
 - (a) subject to an annual radiation of less than 120 Kilolangleys
 - (b) At an altitude of no more than 1,500 metres.
- (ii) The product must be used as a surface solely for the purpose of multi-sport unless otherwise agreed in writing by the manufacturer for said new applications.
- (ii) The product must be sand dressed and installed by a suitably experienced and competent contractor.



Playrite is a division of National Floorcoverings Ltd
Registered office: Greenhill Lane, Riddings, Derbyshire, DE25 4PT
Registered No: 545333 England & Wales

T: +44 (0) 1924 412488
F: +44 (0) 1924 412337
E: info@playrite.co.uk
www.playrite.co.uk



Sponsor
Surfaces for Sport and Leisure

Wellington Mills
Liversedge
West Yorkshire
WF15 7FH

PRODUCT WARRANTY

Manufacturer	PLAYRITE A DIVISION OF NATIONAL FLOORCOVERINGS LTD WELLINGTON MILLS, LIVERSEDE WEST YORKSHIRE WF15 7XA
Product	Matchplay 2
Product Code	MY02
Effective Date	22nd July 2015
Warranty Number	PR239NP Dalhousie Institute

1. Scope

This warranty is given by the Manufacturer for the benefit of **Invision Sports Management Pvt Ltd.** (The Company) of the Product.

Where this warranty conflicts with the manufacturers standard terms and conditions of sale, the terms of this warranty will prevail.


2. Warranty Terms

Subject to the conditions and exclusions set out below, the Product has a warranty for a period of 5 years from the date of installation against defects in manufacturing, materials and ultra violet degradation (including light fastness) and excessive wear.

3. Conditions

For this warranty to be effective and to be binding, the following conditions must apply namely:

- (i) The product must be installed at a location, that is:
 - (a) subject to an annual radiation of less than 120 Kilolangleys
 - (b) At an altitude of no more than 1,500 metres.
- (ii) The product must be used as a surface solely for the purpose of multi-sport unless otherwise agreed in writing by the manufacturer for said new applications.
- (ii) The product must be sand dressed and installed by a suitably experienced and competent contractor.



Playrite is a division of National Floorcoverings Ltd
Registered office: Greenhill Lane, Riddings, Derbyshire, DE25 4PT
Registered No: 545333 England & Wales

T: +44 (0) 1924 412488
F: +44 (0) 1924 412337
E: info@playrite.co.uk
www.playrite.co.uk

EMBEDDED PLAYGROUNDS GAMES



- Made from thermoplastics & bonded with the base surface & last over 5 years.
- Games of Skills & Dexterity, Literacy, Numeracy, Mazes, Maps, Clocks, Exercise, Courts & Pitches are all possible
- Special offer bundles packages for bulk orders.

We can help in
developing innovative
Sports Facilities relevant
to the new & emerging
SPORTING INDIA.

Thank

You